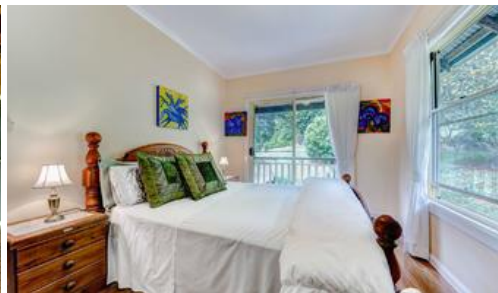




3 Wallace Drive, NOOSAVILLE



## Fantastic Views

Quality living in a heart of Mooloolaba can now be yours in this luxurious complex known as Saint Malo. The fourth floor apartment offers stunning views of the Mooloolaba Marina from the front balcony, and the majestic Glasshouse Mountains from the back.

This sensational first home located in the Village at Coopers Plains is an easy walk to city bus & train. Offering you a low maintenance lifestyle with all the trimmings such as 4 bedroom plus study, 2 bathroom, spacious kitchen with breakfast bar, double lock up garage and covered entertainment area. Forget all the others, this property deserves your inspection today!!

The above information provided has been furnished to us by the vendor/s. We have not verified whether or not that information is accurate and do not have any belief in one way or the other in its accuracy. We do not accept any responsibility to any person for its accuracy and do no more than pass it on. All interested parties should make and rely upon their own inquiries in order to determine whether or not this information is in fact accurate.

4 2 3

**Price** \$795,000  
**Property Type** Residential  
**Property ID** 1119

### Agent Details

John Smith - 0400 000 222

### Office Details

Noosa heads  
 96 Noosa Parade Noosa Heads QLD  
 4567  
 07 3059 3035

Aro realty